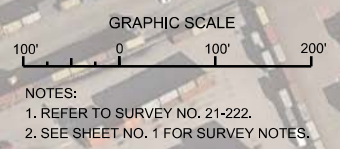
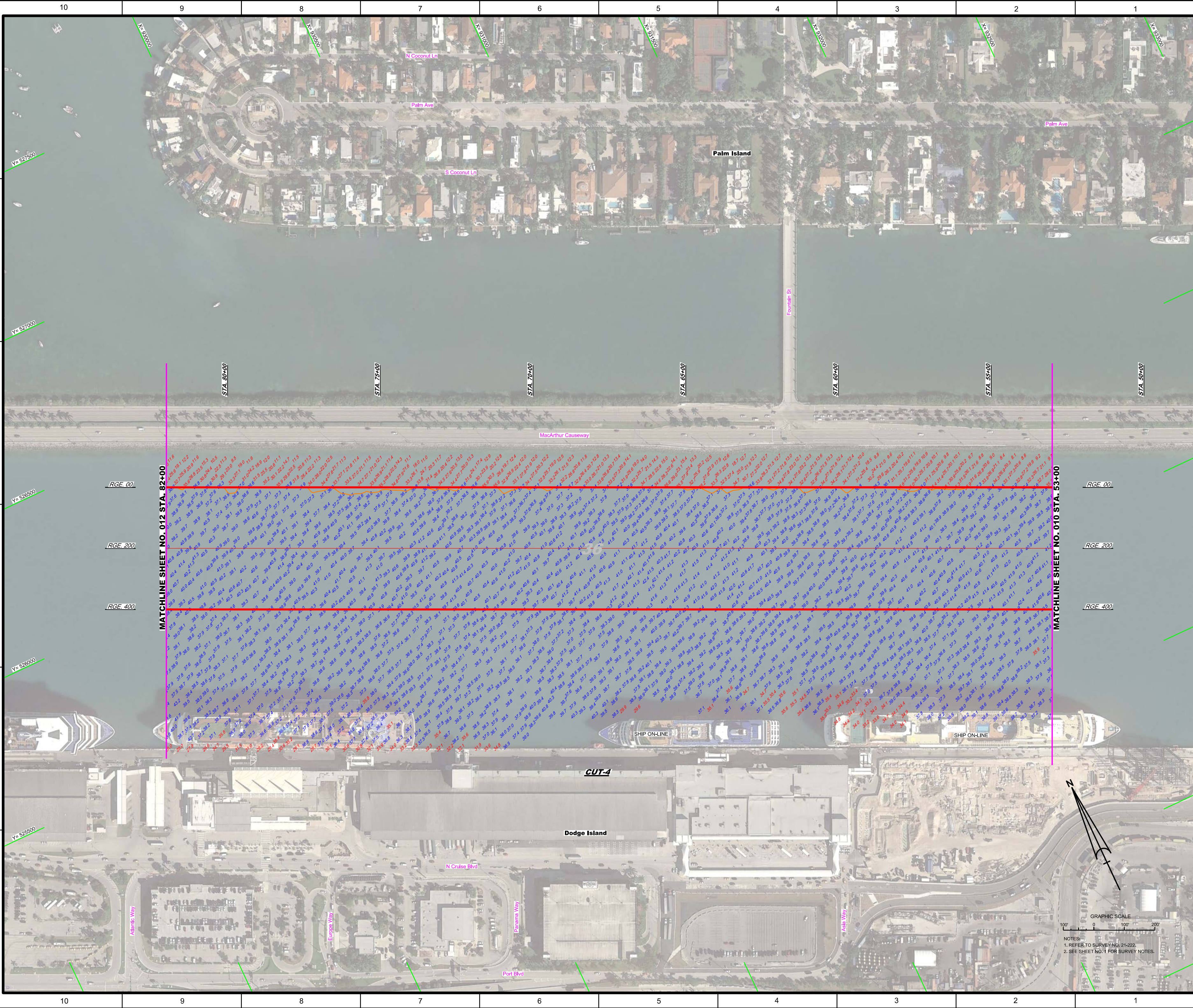


<p>US Army Corps of Engineers Jacksonville District</p>	
<p>SAFETY ON THIS JOB DEPENDS ON YOU</p>	
<p>DEPARTMENT OF THE ARMY JACKSONVILLE DISTRICT, CORPS OF ENGINEERS JACKSONVILLE, FLORIDA</p>	
<p>Checked By: CHR</p>	<p>Designed By: WRM DWN/RF</p>
<p>Drawn By: WRM</p>	<p>Scale: JUL 2021</p>
<p>21-222A-CORR08.DGN MAMI HARBOUR CANALS 21-222A-CORR08.DGN MAMI HARBOUR CANALS 21-222A-CORR08.DGN</p>	
<p>MAMI HARBOUR DADE COUNTY, FLORIDA HYDROGRAPHIC EXAM SURVEY FY21 35, 36, 50 AND 52-FOOT PROJECT STA. 29+00 THRU STA. 53+00 CUT-4 PLAN</p>	
<p>Scale: AS SHOWN</p>	
<p>Drawing no. 10</p>	
<p>SHEET 10 OF 18</p>	





US Army Corps of Engineers
Jacksonville District
SAFETY ON THIS JOB
DEPENDS ON YOU

DEPARTMENT OF THE ARMY
JACKSONVILLE DISTRICT, CORPS OF ENGINEERS
JACKSONVILLE, FLORIDA

Checked By: GHR
Designed By: WRM
Drawn By: WRM
Scale: AS SHOWN
Date: JUL 2021

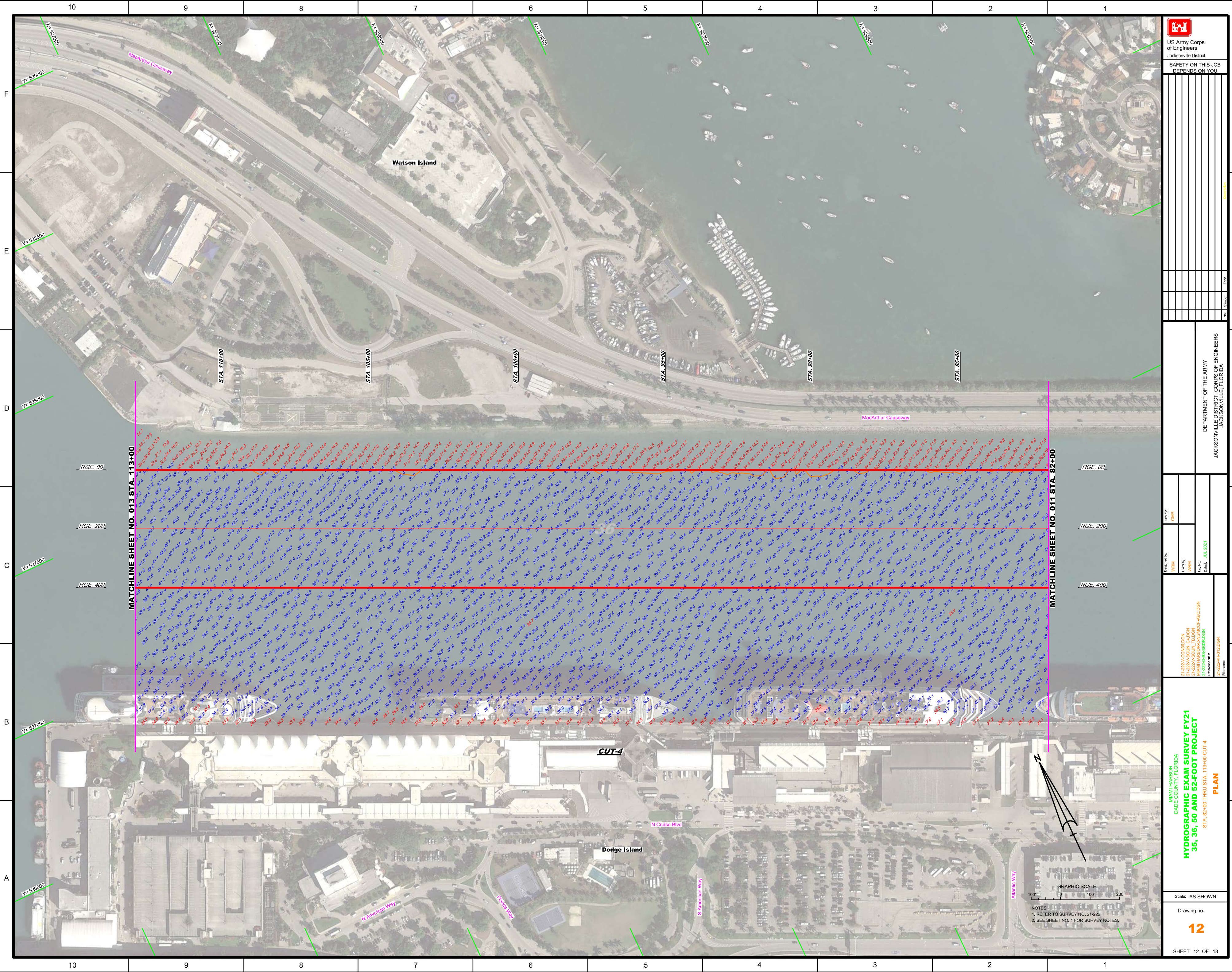
MAMI HARBOR
DADE COUNTY, FLORIDA
HYDROGRAPHIC EXAM SURVEY FY21
35, 36, 50 AND 52-FOOT PROJECT
STA. 53+00 THRU STA. 82+00 CUT-4
PLAN

Scale: AS SHOWN
Drawing no. 11
SHEET 11 OF 18

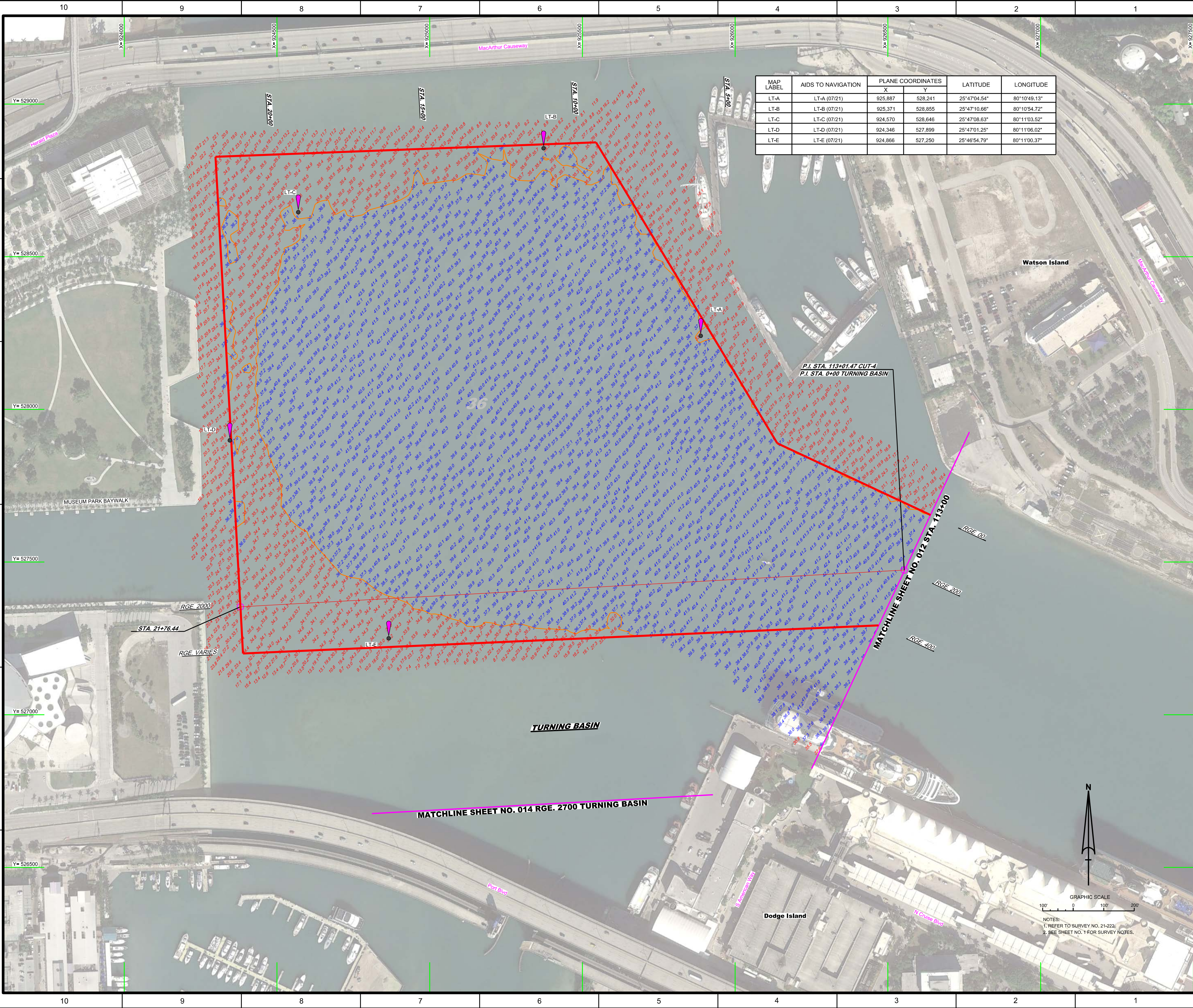


GRAPHIC SCALE
100' 0 100' 200'


NOTES:
1. REFER TO SURVEY NO. 21-222.
2. SEE SHEET NO. 1 FOR SURVEY NOTES.



GRAPHIC SCALE
0 100 200
NOTES:
1. REFER TO SURVEY NO. 21-222,
2. SEE SHEET NO. 1 FOR SURVEY NOTES.



MAP LABEL	AIDS TO NAVIGATION	PLANE COORDINATES		LATITUDE	LONGITUDE
		X	Y		
LT-A	LT-A (07/21)	925,887	528,241	25°47'04.54"	80°10'49.13"
LT-B	LT-B (07/21)	925,371	528,855	25°47'10.66"	80°10'54.72"
LT-C	LT-C (07/21)	924,570	528,646	25°47'08.63"	80°11'03.52"
LT-D	LT-D (07/21)	924,346	527,899	25°47'01.25"	80°11'06.02"
LT-E	LT-E (07/21)	924,866	527,250	25°46'54.79"	80°11'00.37"



US Army Corps of Engineers
Jacksonville District

SAFETY ON THIS JOB
DEPENDS ON YOU

Checked By: GHR
Designed By: WRM
Drawn By: WRM
In Charge: WRM
Date: JUL 2021

DEPARTMENT OF THE ARMY
JACKSONVILLE DISTRICT, CORPS OF ENGINEERS
JACKSONVILLE, FLORIDA

21-222A-CO-08.DGN
21-222A-HAV-DGN
21-222A-CO-08-01.DGN
21-222A-CO-08-02.DGN
21-222A-CO-08-03.DGN
21-222A-CO-08-04.DGN
21-222A-CO-08-05.DGN
21-222A-CO-08-06.DGN
21-222A-CO-08-07.DGN
21-222A-CO-08-08.DGN
21-222A-CO-08-09.DGN
21-222A-CO-08-10.DGN
21-222A-CO-08-11.DGN
21-222A-CO-08-12.DGN
21-222A-CO-08-13.DGN
21-222A-CO-08-14.DGN
21-222A-CO-08-15.DGN
21-222A-CO-08-16.DGN
21-222A-CO-08-17.DGN
21-222A-CO-08-18.DGN
21-222A-CO-08-19.DGN
21-222A-CO-08-20.DGN
21-222A-CO-08-21.DGN
21-222A-CO-08-22.DGN
21-222A-CO-08-23.DGN
21-222A-CO-08-24.DGN
21-222A-CO-08-25.DGN
21-222A-CO-08-26.DGN
21-222A-CO-08-27.DGN
21-222A-CO-08-28.DGN
21-222A-CO-08-29.DGN
21-222A-CO-08-30.DGN
21-222A-CO-08-31.DGN
21-222A-CO-08-32.DGN
21-222A-CO-08-33.DGN
21-222A-CO-08-34.DGN
21-222A-CO-08-35.DGN
21-222A-CO-08-36.DGN
21-222A-CO-08-37.DGN
21-222A-CO-08-38.DGN
21-222A-CO-08-39.DGN
21-222A-CO-08-40.DGN
21-222A-CO-08-41.DGN
21-222A-CO-08-42.DGN
21-222A-CO-08-43.DGN
21-222A-CO-08-44.DGN
21-222A-CO-08-45.DGN
21-222A-CO-08-46.DGN
21-222A-CO-08-47.DGN
21-222A-CO-08-48.DGN
21-222A-CO-08-49.DGN
21-222A-CO-08-50.DGN
21-222A-CO-08-51.DGN
21-222A-CO-08-52.DGN
21-222A-CO-08-53.DGN
21-222A-CO-08-54.DGN
21-222A-CO-08-55.DGN
21-222A-CO-08-56.DGN
21-222A-CO-08-57.DGN
21-222A-CO-08-58.DGN
21-222A-CO-08-59.DGN
21-222A-CO-08-60.DGN
21-222A-CO-08-61.DGN
21-222A-CO-08-62.DGN
21-222A-CO-08-63.DGN
21-222A-CO-08-64.DGN
21-222A-CO-08-65.DGN
21-222A-CO-08-66.DGN
21-222A-CO-08-67.DGN
21-222A-CO-08-68.DGN
21-222A-CO-08-69.DGN
21-222A-CO-08-70.DGN
21-222A-CO-08-71.DGN
21-222A-CO-08-72.DGN
21-222A-CO-08-73.DGN
21-222A-CO-08-74.DGN
21-222A-CO-08-75.DGN
21-222A-CO-08-76.DGN
21-222A-CO-08-77.DGN
21-222A-CO-08-78.DGN
21-222A-CO-08-79.DGN
21-222A-CO-08-80.DGN
21-222A-CO-08-81.DGN
21-222A-CO-08-82.DGN
21-222A-CO-08-83.DGN
21-222A-CO-08-84.DGN
21-222A-CO-08-85.DGN
21-222A-CO-08-86.DGN
21-222A-CO-08-87.DGN
21-222A-CO-08-88.DGN
21-222A-CO-08-89.DGN
21-222A-CO-08-90.DGN
21-222A-CO-08-91.DGN
21-222A-CO-08-92.DGN
21-222A-CO-08-93.DGN
21-222A-CO-08-94.DGN
21-222A-CO-08-95.DGN
21-222A-CO-08-96.DGN
21-222A-CO-08-97.DGN
21-222A-CO-08-98.DGN
21-222A-CO-08-99.DGN
21-222A-CO-08-100.DGN

MAAMI HARBOR
DADE COUNTY, FLORIDA
**HYDROGRAPHIC EXAM SURVEY FY21
35, 36, 50 AND 52-FOOT PROJECT**
STA. 113+00 CUT-4 THRU STA. 21+76.44 TURNING BASIN
PLAN

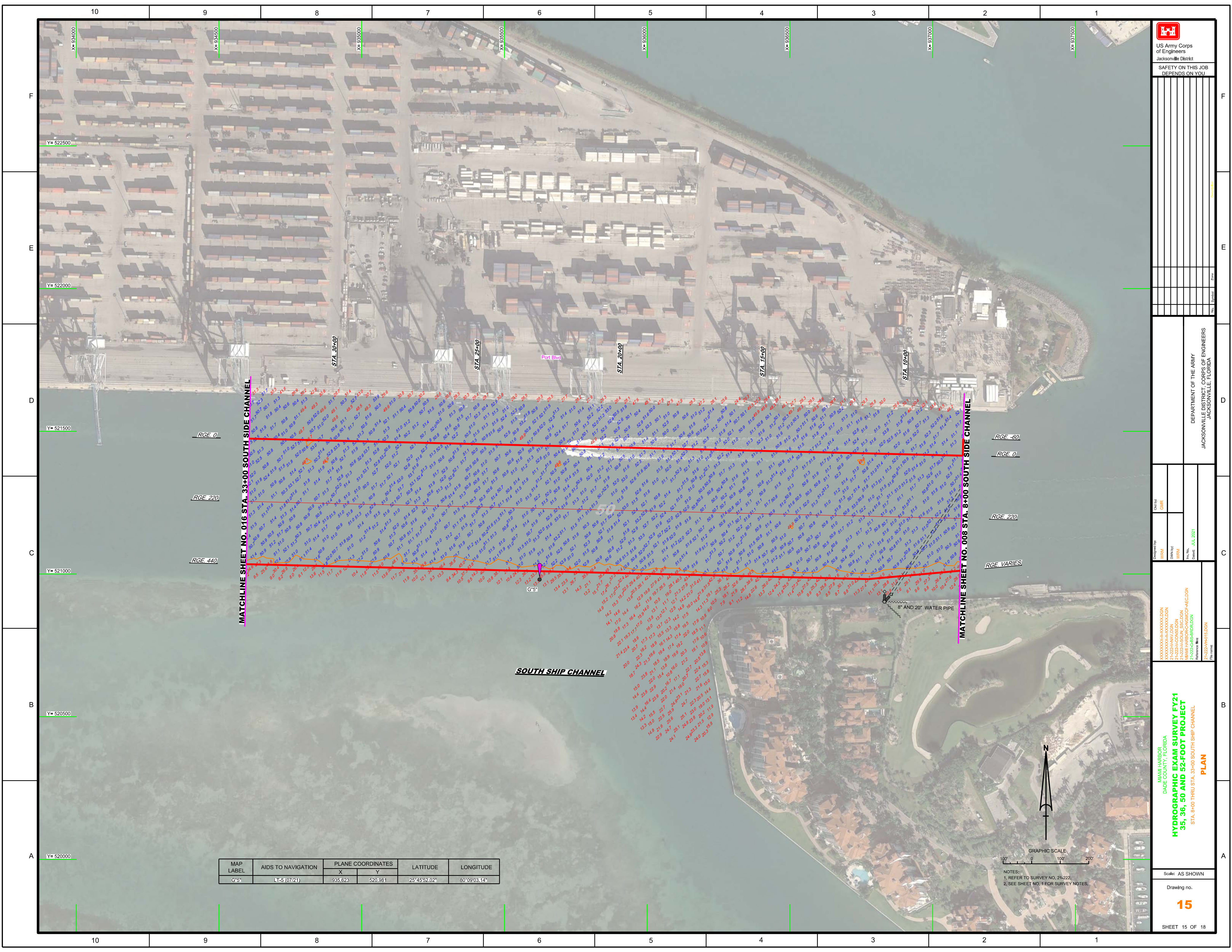
Scale: AS SHOWN
Drawing no. **13**
SHEET 13 OF 18



MAP LABEL	AIDS TO NAVIGATION	PLANE COORDINATES		LATITUDE	LONGITUDE
		X	Y		
SIGN	SIGN (07/21)	926,059	524,730	25°46'29.76"	80°10'47.50"

US Army Corps of Engineers
Jacksonville District
SAFETY ON THIS JOB
DEPENDS ON YOU

DEPARTMENT OF THE ARMY JACKSONVILLE DISTRICT, CORPS OF ENGINEERS JACKSONVILLE, FLORIDA	Call by: GHR	Designed by: WRM DWN/PJC WRM JUL 2021	XXXXXXXXXXXXXXXXXXXX 21-222AAAV,DCN LGDN 21-222G-BS-BRD,DCN Reference Mark: 21-222A-PRI,LDGN <small>File Name:</small>	HYDROGRAPHIC EXAM SURVEY FY21 35, 36, 50 AND 52-FOOT PROJECT PLAN	Scale: AS SHOWN Drawing no. 14 SHEET 14 OF 18



MATCHLINE SHEET NO. 016 STA. 33+00 SOUTH SIDE CHANNEL

MATCHLINE SHEET NO. 008 STA. 8+00 SOUTH SIDE CHANNEL

MAP LABEL	AIDS TO NAVIGATION	PLANE COORDINATES		LATITUDE	LONGITUDE
		X	Y		
G-5	LT-5 (07/21)	935.623	520.981	25°45'52.02"	80°09'03.14"

Designed by: **WRM**
Checked by: **GHR**
Drawn by: **WRM**
Reviewed by: **WRM**
Date: **JUL 2021**

XXXXXXXXXXXXXXXXXXXX
DADE COUNTY, FLORIDA
21-222A-V-CON-001.DGN
MAMI HARBOR-CANAL-C&E-CON
21-222-G-B-S-BRD-001.DGN
Reference File:
21-222A-V-H-1.DGN
File name:

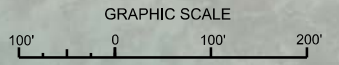
MAMI HARBOR
DADE COUNTY, FLORIDA
HYDROGRAPHIC EXAM SURVEY FY21
35, 36, 50 AND 52-FOOT PROJECT
STA. 8+00 THRU STA. 33+00 SOUTH SHIP CHANNEL
PLAN

Scale: AS SHOWN
Drawing no.
15
SHEET 15 OF 18


DEPARTMENT OF THE ARMY
JACKSONVILLE DISTRICT, CORPS OF ENGINEERS
JACKSONVILLE, FLORIDA



MAP LABEL	AIDS TO NAVIGATION	PLANE COORDINATES		LATITUDE	LONGITUDE
		X	Y		
G-7*	LT-7 (07/21)	334.128	521.007	25°45'52.38"	80°09'19.49"
G-9*	LT. BUOY-9 (07/21)	333.120	521.055	25°45'52.92"	80°09'30.51"



NOTES:
 1. REFER TO SURVEY NO. 21-222.
 2. SEE SHEET NO. 1 FOR SURVEY NOTES.



US Army Corps of Engineers
 Jacksonville District
 SAFETY ON THIS JOB
 DEPENDS ON YOU

Designed by: WRM
 Drawn by: WRM
 Checked: JUL 2021

Client: GHR
 Project: MAMI HARBOR CANAL/CAE/CDON
 Reference: 21-222-01-01 (LDN)

MAMI HARBOR
 DADE COUNTY, FLORIDA
**HYDROGRAPHIC EXAM SURVEY FY21
 35, 36, 50 AND 52-FOOT PROJECT**
 STA. 33+00 SOUTH SHIP CHANNEL THRU STA. 6+00 LUMMUS ISLAND TURNING BASIN
PLAN

Scale: AS SHOWN

Drawing no.

16

DEPARTMENT OF THE ARMY
 JACKSONVILLE DISTRICT, CORPS OF ENGINEERS
 JACKSONVILLE, FLORIDA

SHEET 16 OF 18

MAP LABEL	AIDS TO NAVIGATION	PLANE COORDINATES		LATITUDE	LONGITUDE
		X	Y		
G*11"	LT-11 (07/21)	929,176	522,672	25°46'09.18"	80°10'13.54"
Y*A"	LT-A (07/21)	931,368	521,159	25°45'54.06"	80°09'49.67"
Y*B"	LT-B (07/21)	930,372	521,128	25°45'53.80"	80°09'58.38"
Y*C"	LT-C (07/21)	929,690	521,167	25°45'54.24"	80°10'08.02"
Y*D"	LT-D (07/21)	929,264	521,591	25°45'58.47"	80°10'12.65"
Y*E"	LT-E (07/21)	926,147	522,012	25°46'02.64"	80°10'13.90"

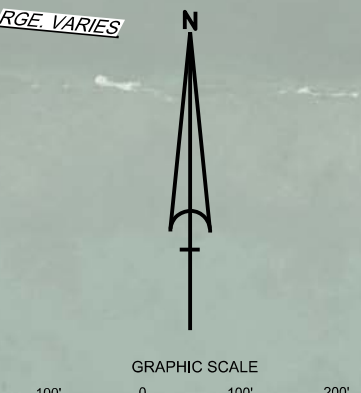
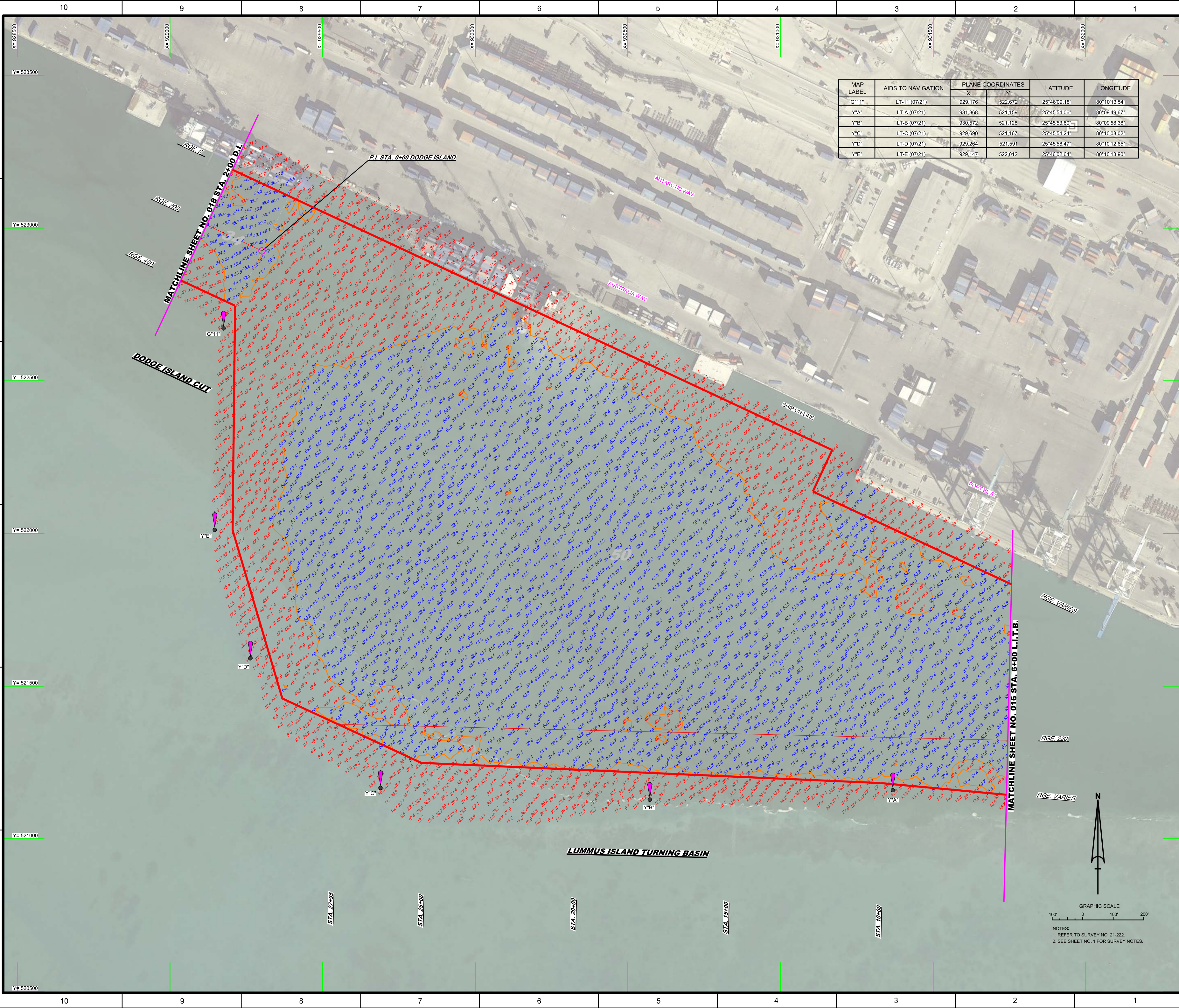
REV	DESCRIPTION	DATE	BY	CHECK

DEPARTMENT OF THE ARMY
JACKSONVILLE DISTRICT, CORPS OF ENGINEERS
JACKSONVILLE, FLORIDA

Drawn by: GHR
Checked by: WRM
Design Date: JUL 2021
Reference Map: 21-222A-CON-04-00N
21-222A-CON-04-00N
21-222A-CON-04-00N
21-222A-CON-04-00N
21-222A-CON-04-00N
21-222A-CON-04-00N
21-222A-CON-04-00N
21-222A-CON-04-00N

HYDROGRAPHIC EXAM SURVEY FY21 35, 36, 50 AND 52-FOOT PROJECT
STA. 6+00 THRU STA. 27+45 LUMMUS ISLAND TURNING BASIN & STA. 0+00 THRU STA. 6+00 DODGE ISLAND

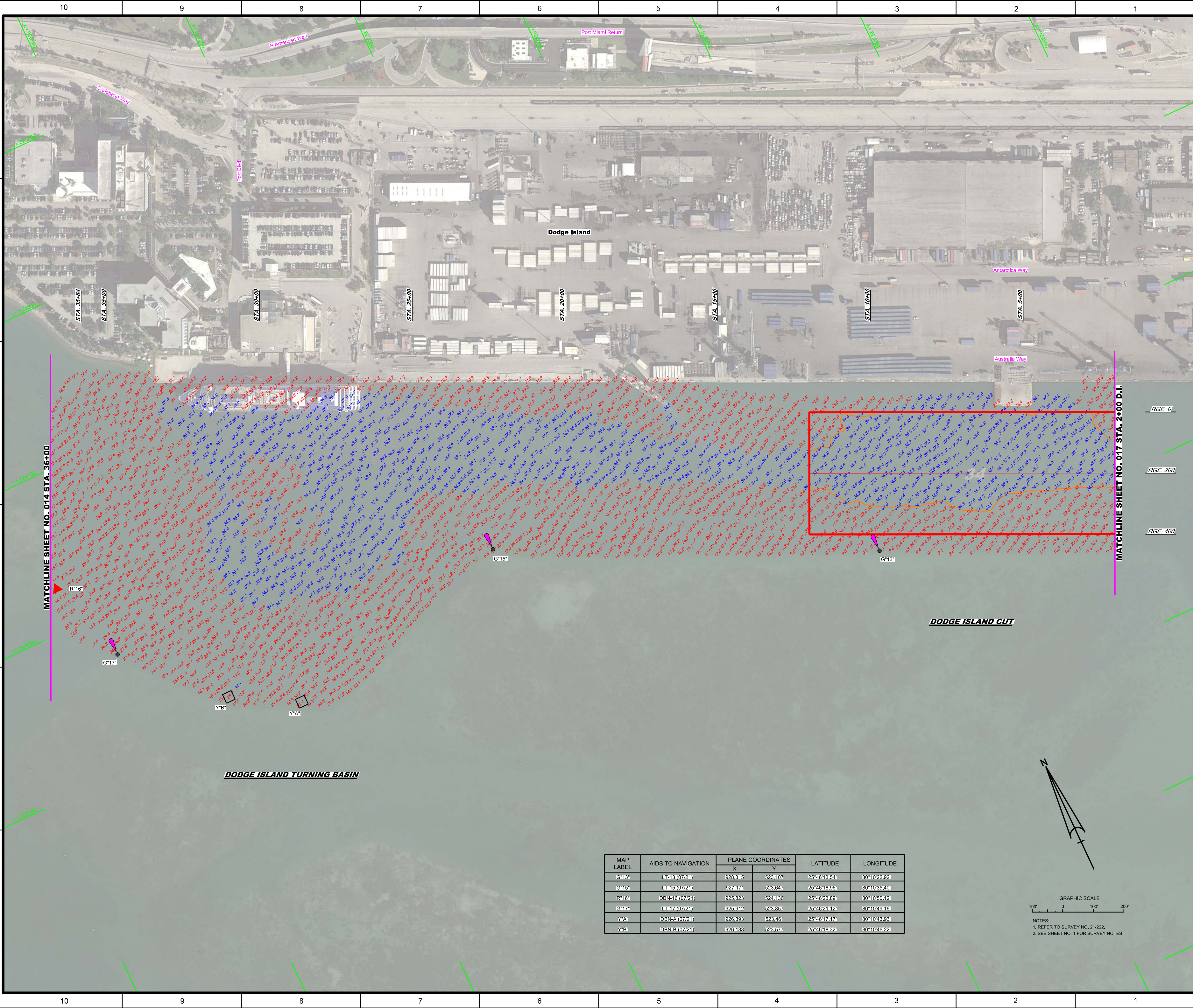
PLAN
Scale: AS SHOWN
Drawing no. **17**
SHEET 17 OF 18



NOTES:
1. REFER TO SURVEY NO. 21-222.
2. SEE SHEET NO. 1 FOR SURVEY NOTES.

10
9
8
7
6
5
4
3
2
1
F
E
D
C
B
A

X= 928500
Y= 523500
X= 929000
Y= 523000
X= 929500
Y= 522500
X= 930000
Y= 522000
X= 930500
Y= 521500
X= 931000
Y= 521000
X= 931500
Y= 520500



MATCHLINE SHEET NO. 014 STA. 36+00

MATCHLINE SHEET NO. 017 STA. 2+00 D.I.

DODGE ISLAND TURNING BASIN

DODGE ISLAND CUT

MAP LABEL	AIDS TO NAVIGATION	PLANE COORDINATES		LATITUDE	LONGITUDE
		X	Y		
G*13	LT#13 (07/21)	928815	923107	25°48'13.54"	80°10'22.92"
G*15	LT#15 (07/21)	927474	923647	25°48'18.96"	80°10'35.40"
R*16	DBN#16 (07/21)	925823	924136	25°48'29.89"	80°10'50.12"
G*17	LT#17 (07/21)	925912	923857	25°48'24.12"	80°10'49.16"
Y*A	DBN-A (07/21)	926393	923461	25°48'17.47"	80°10'43.93"
Y*B	DBN-B (07/21)	926183	923577	25°48'18.32"	80°10'46.22"

GRAPHIC SCALE
100' 0 100' 200'
NOTES:
1. REFER TO SURVEY NO. 21-222.
2. SEE SHEET NO. 1 FOR SURVEY NOTES.

US Army Corps of Engineers
Jacksonville District

SAFETY ON THIS JOB
DEPENDS ON YOU

DEPARTMENT OF THE ARMY
JACKSONVILLE DISTRICT, CORPS OF ENGINEERS
JACKSONVILLE, FLORIDA

MAMI HARBOR
DADE COUNTY, FLORIDA
HYDROGRAPHIC EXAM SURVEY FY21
35, 36, 50 AND 52-FOOT PROJECT
STA. 2+00 THRU STA. 35+84 DODGE ISLAND CUT
PLAN

Scale: AS SHOWN

Drawing no.
18

SHEET 18 OF 18